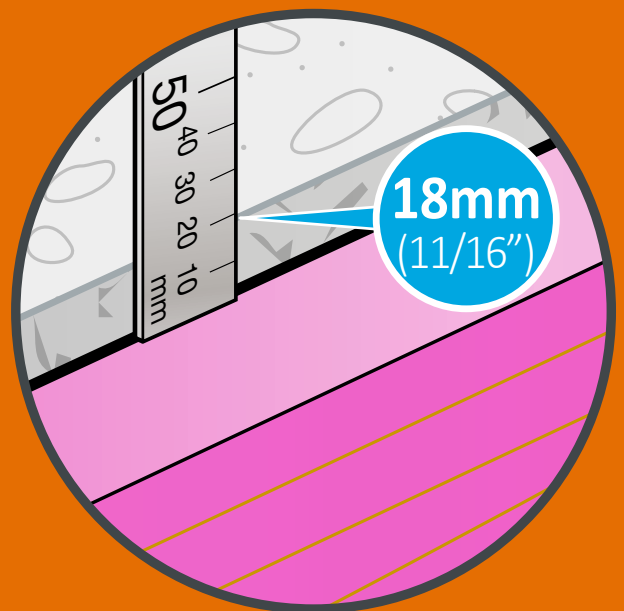


# CONSTRUCTION GUIDELINES



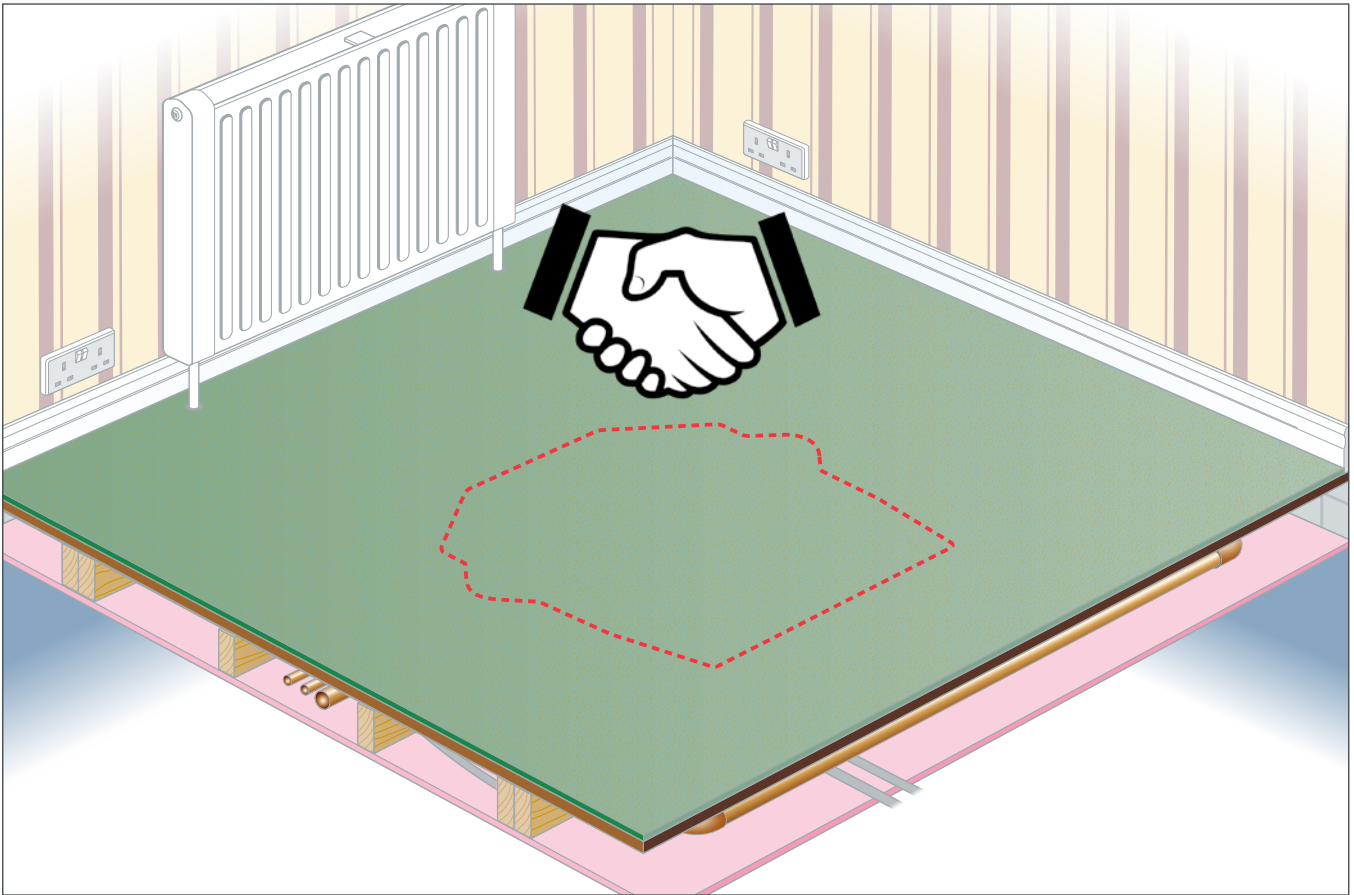
**Please note that;**

- (a) This document is designed to be used as a guide only. You should seek independent engineering or construction advice to determine that the desired and/or proposed alterations to a home are suitable to the specific existing structure.**
- (b) All building/construction work must be carried out by a licensed contractor where required by code or law.**

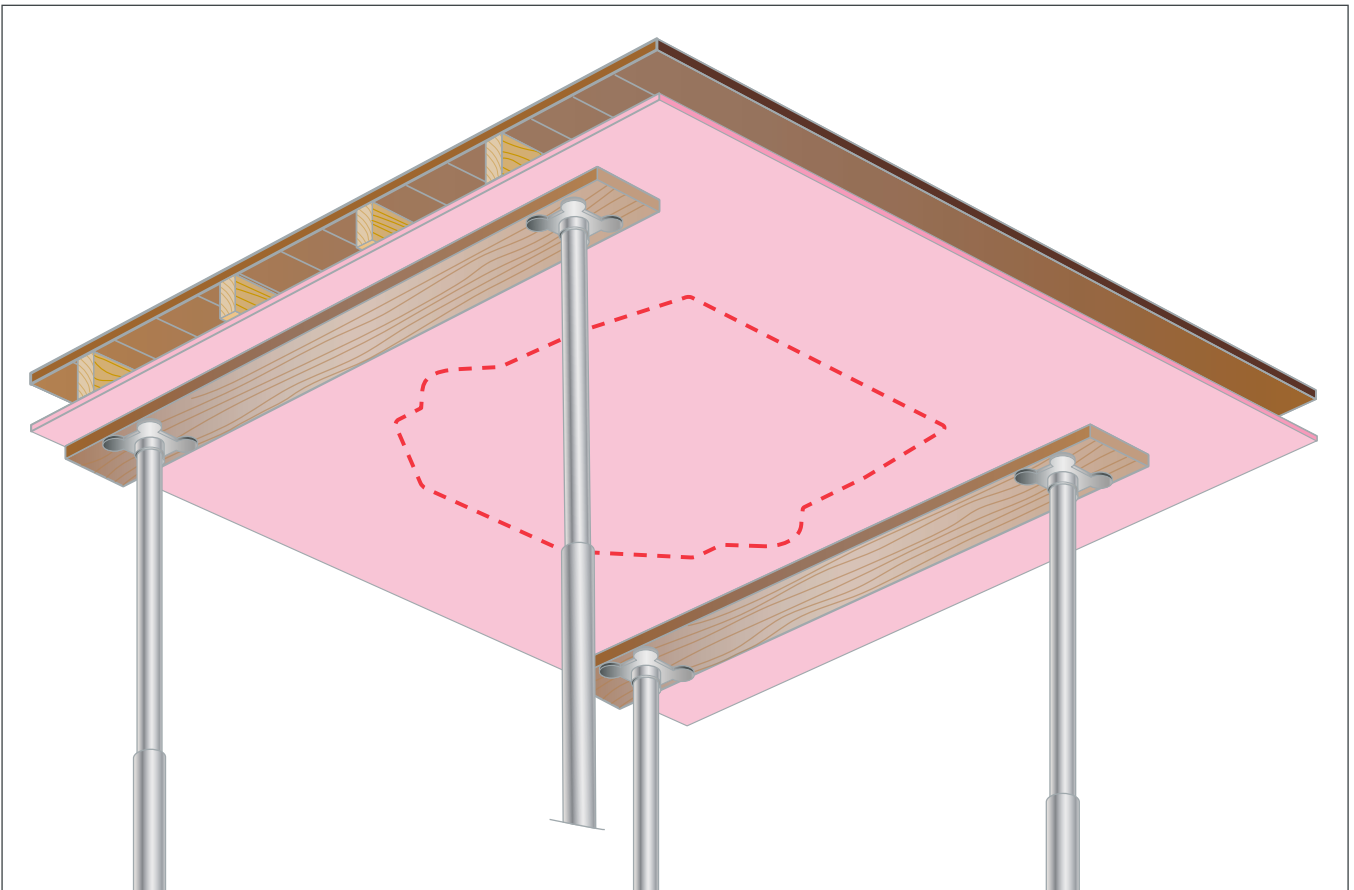
## SECTION 1: Aperture Preparation in a Wooden Floor

Agree position of lift with customer .....	8
Support ceiling with Acrow props .....	8
Roll carpet back .....	9
Lift floorboards and inspect for pipes and/or cables .....	9
Position and mark using insert as template .....	10
Cut pipes, cables and joists .....	10
Double up joists .....	11
Frame build dimensions - Duo Classic.....	11
Frame build dimensions - Trio Classic .....	12
Frame build dimensions - Duo+ and Duo Alta .....	12
Frame build dimensions - Trio+ and Trio Alta .....	13
Frame build dimensions - Duo ThruCar .....	13
Frame build dimensions - Trio ThruCar .....	14
Frame build dimensions - Trio Fire Seal .....	14
Build frame.....	15
Build frame.....	15
Re-routing pipes and cables around frame .....	16
Cut aperture through ceiling .....	16
Re-lay floor boards.....	17
Drill pilot holes from below .....	17
Position insert on pilot holes and draw round insert.....	18
Add 25mm (1") to perimeter, excl. guide rail profile 'ears' .....	18
Cut out aperture .....	19
Check that insert fits.....	19
Remove insert and re-lay carpet .....	20
Stretch and re-fit carpet .....	20
Feel for edges and cut carpet for aperture .....	21
Remove and retain carpet cut-out .....	21

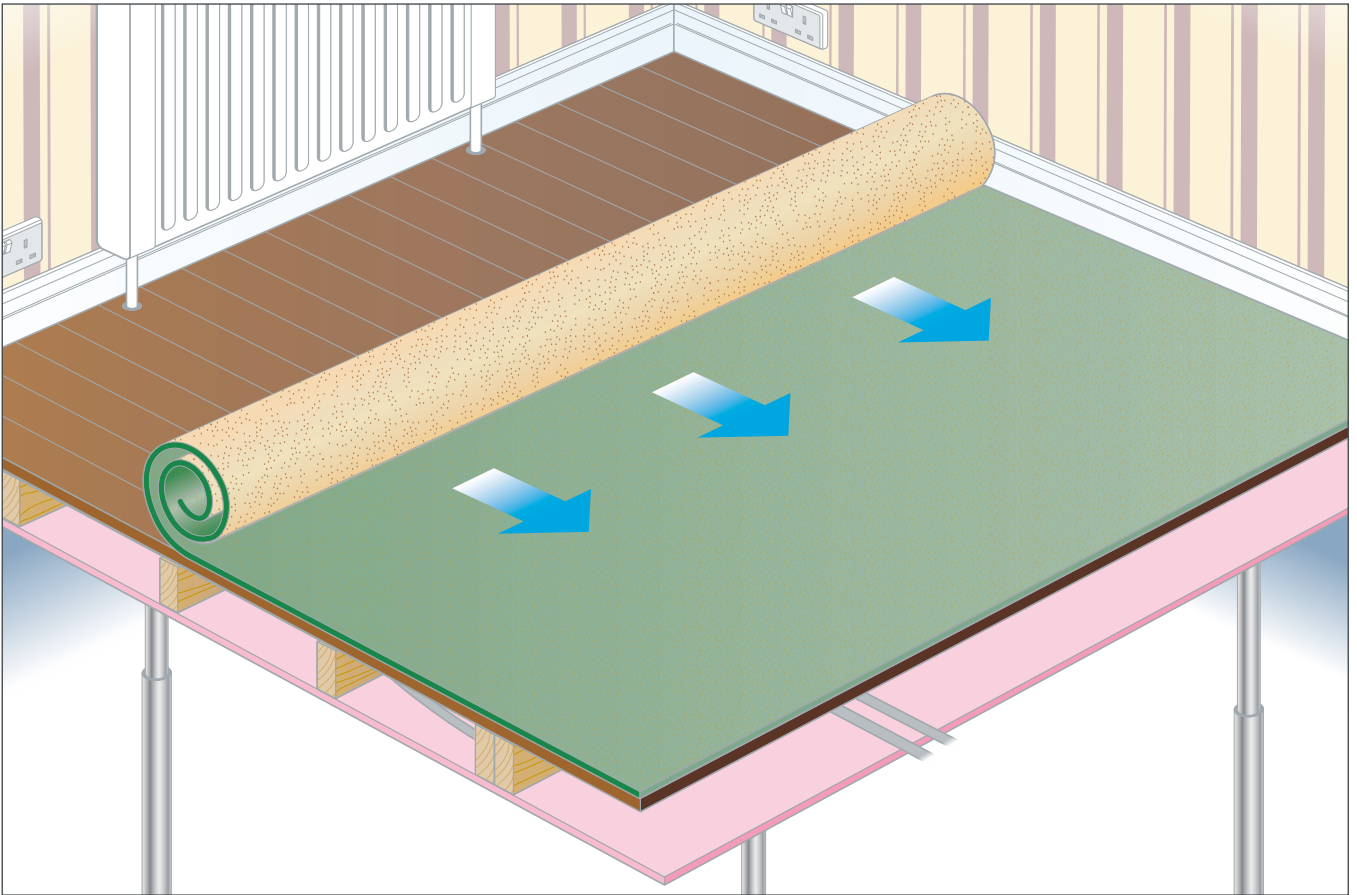
Agree position of lift with customer



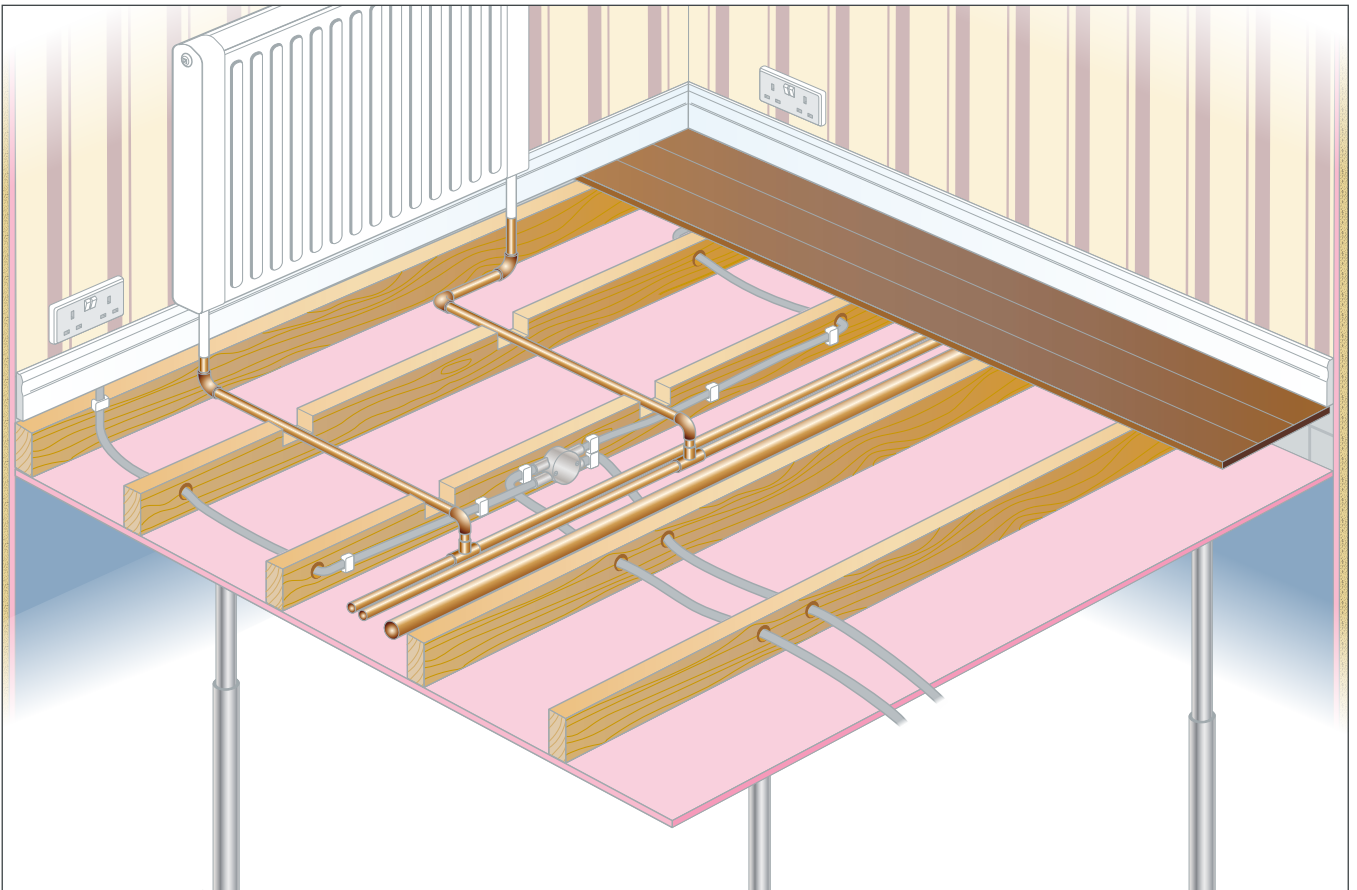
Support ceiling with Acrow props



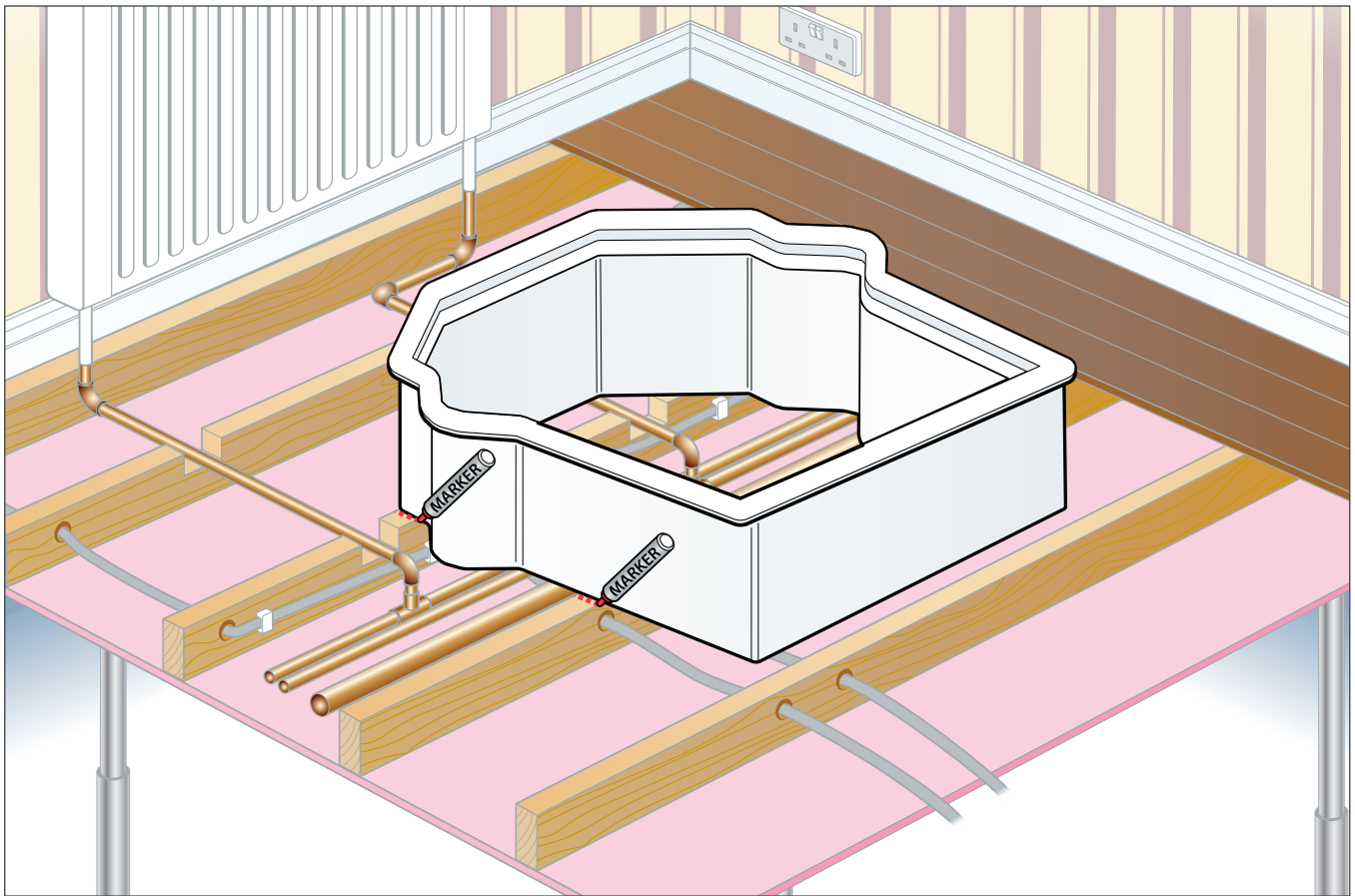
Roll carpet back



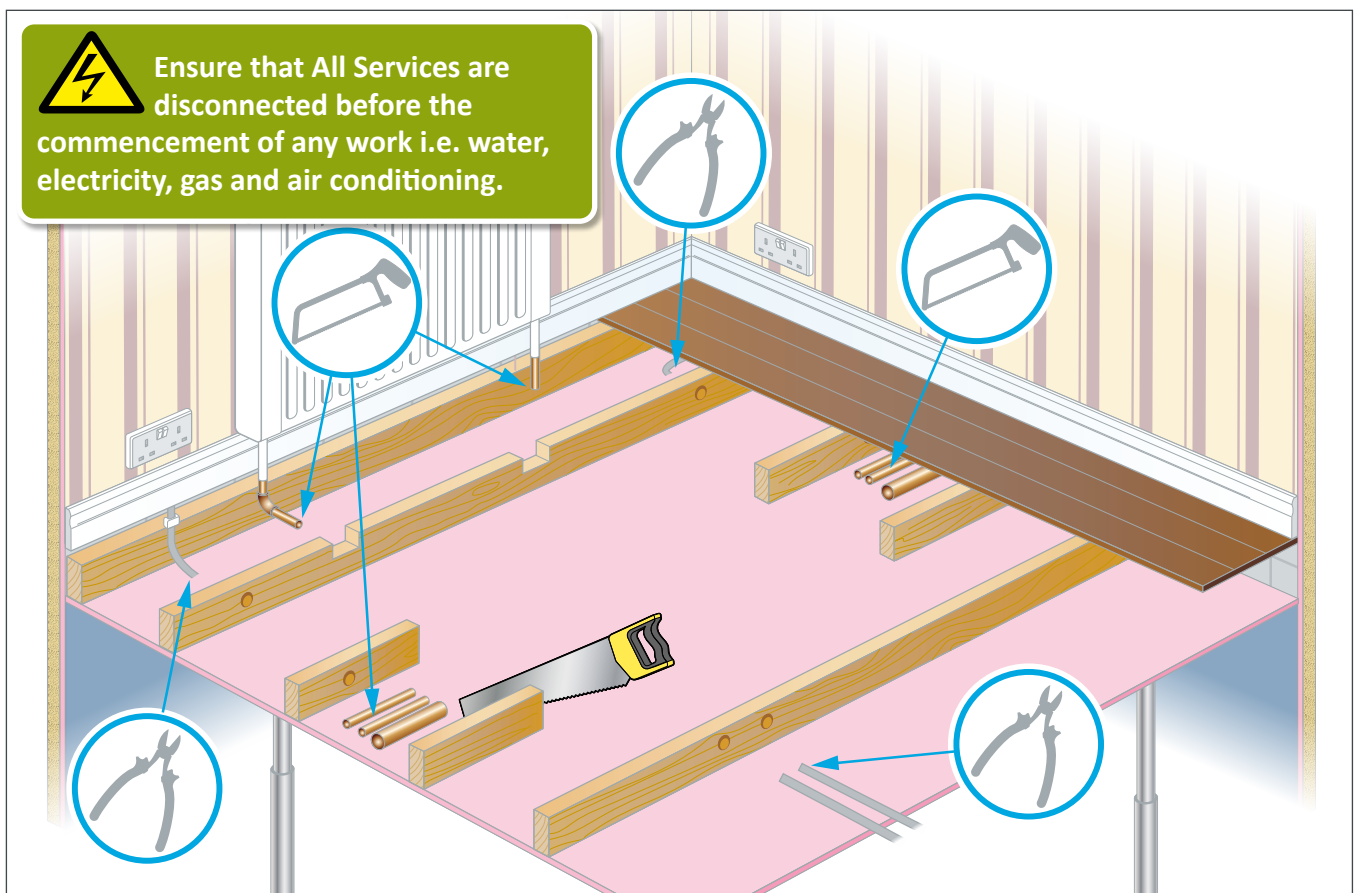
Lift floorboards and inspect for pipes and/or cables



## Position and mark using insert as template

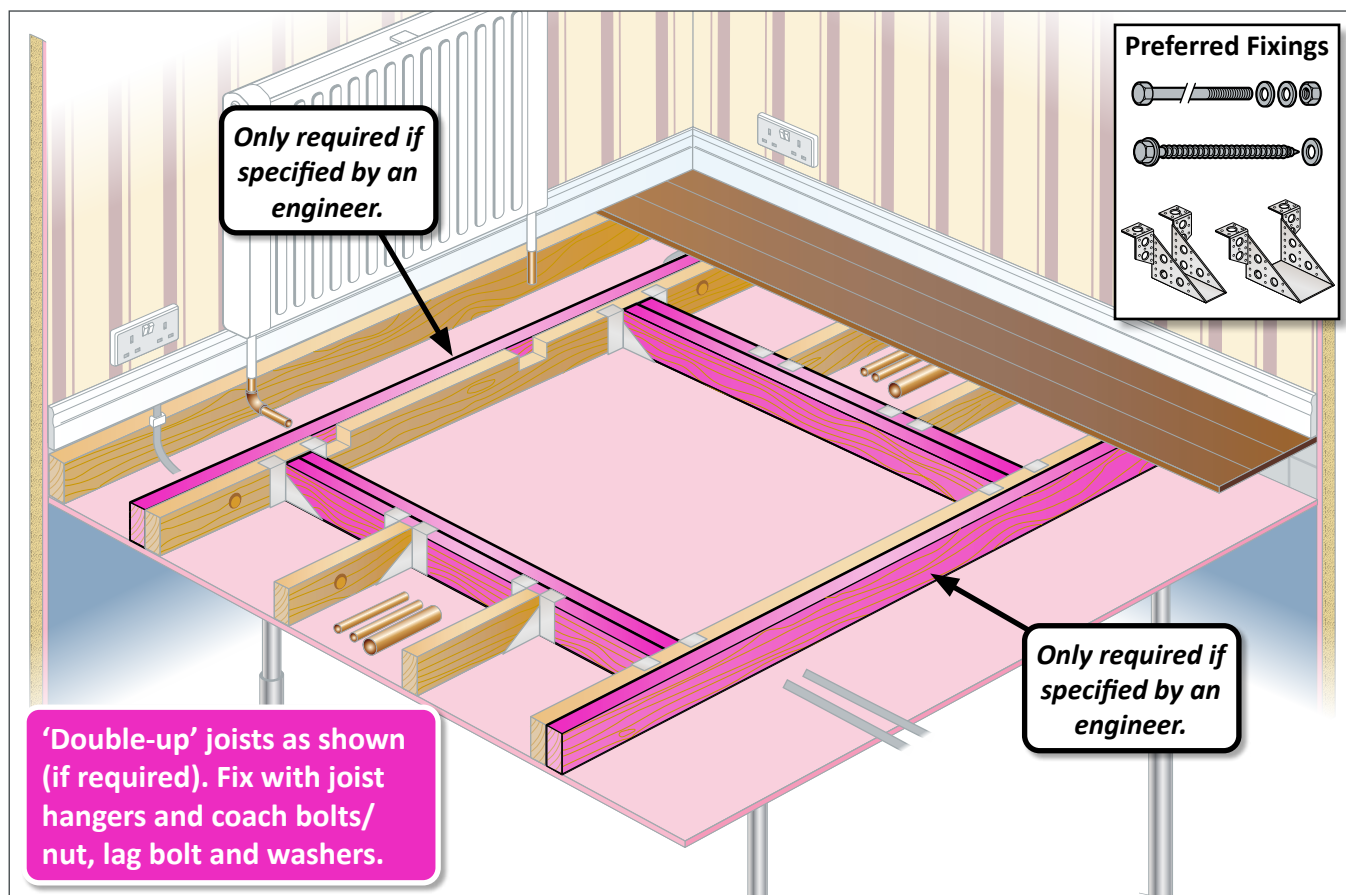


## Cut pipes, cables and joists

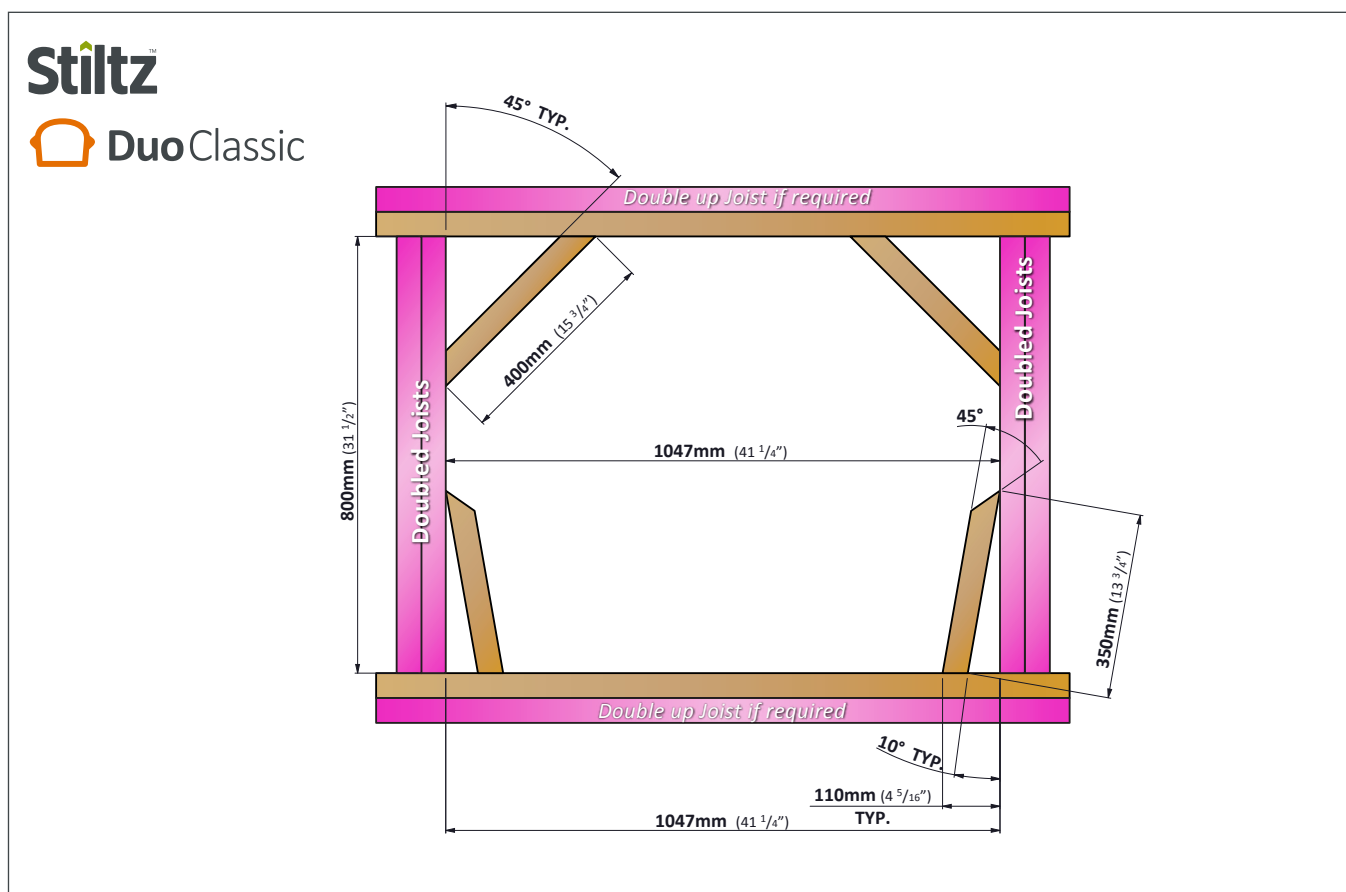




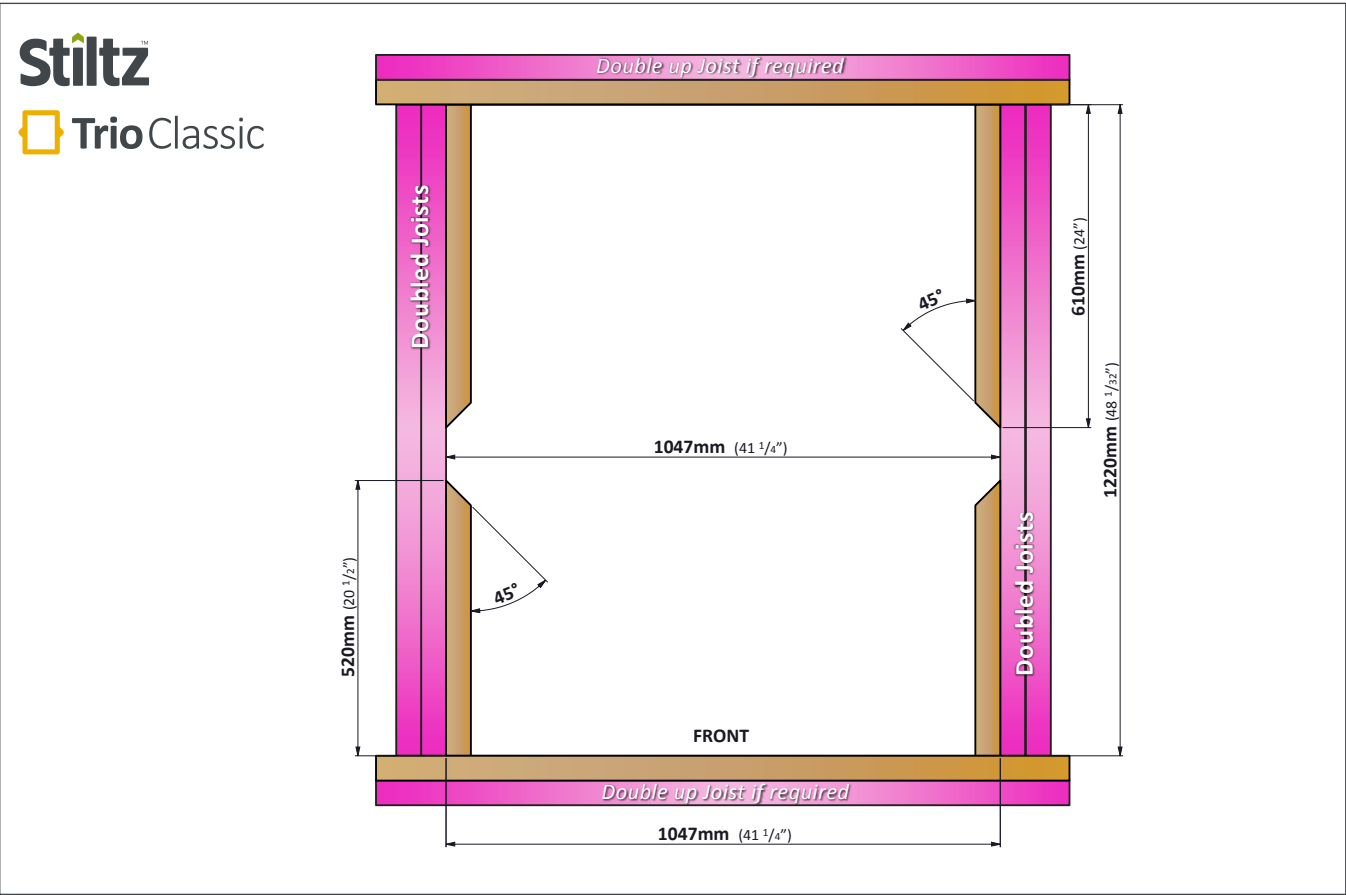
## Double up joists



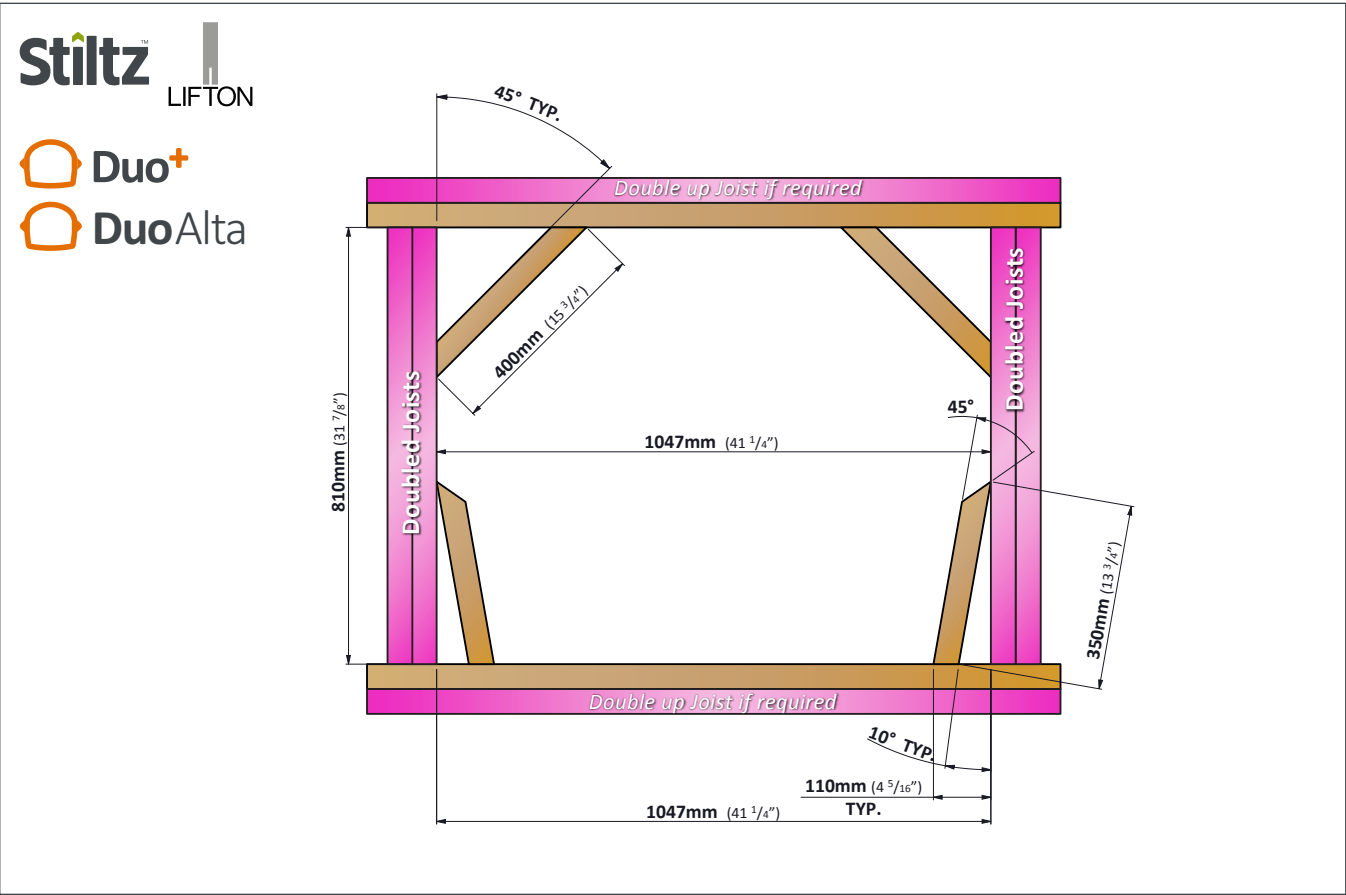
## Frame build dimensions - Duo Classic



Frame build dimensions - Trio Classic

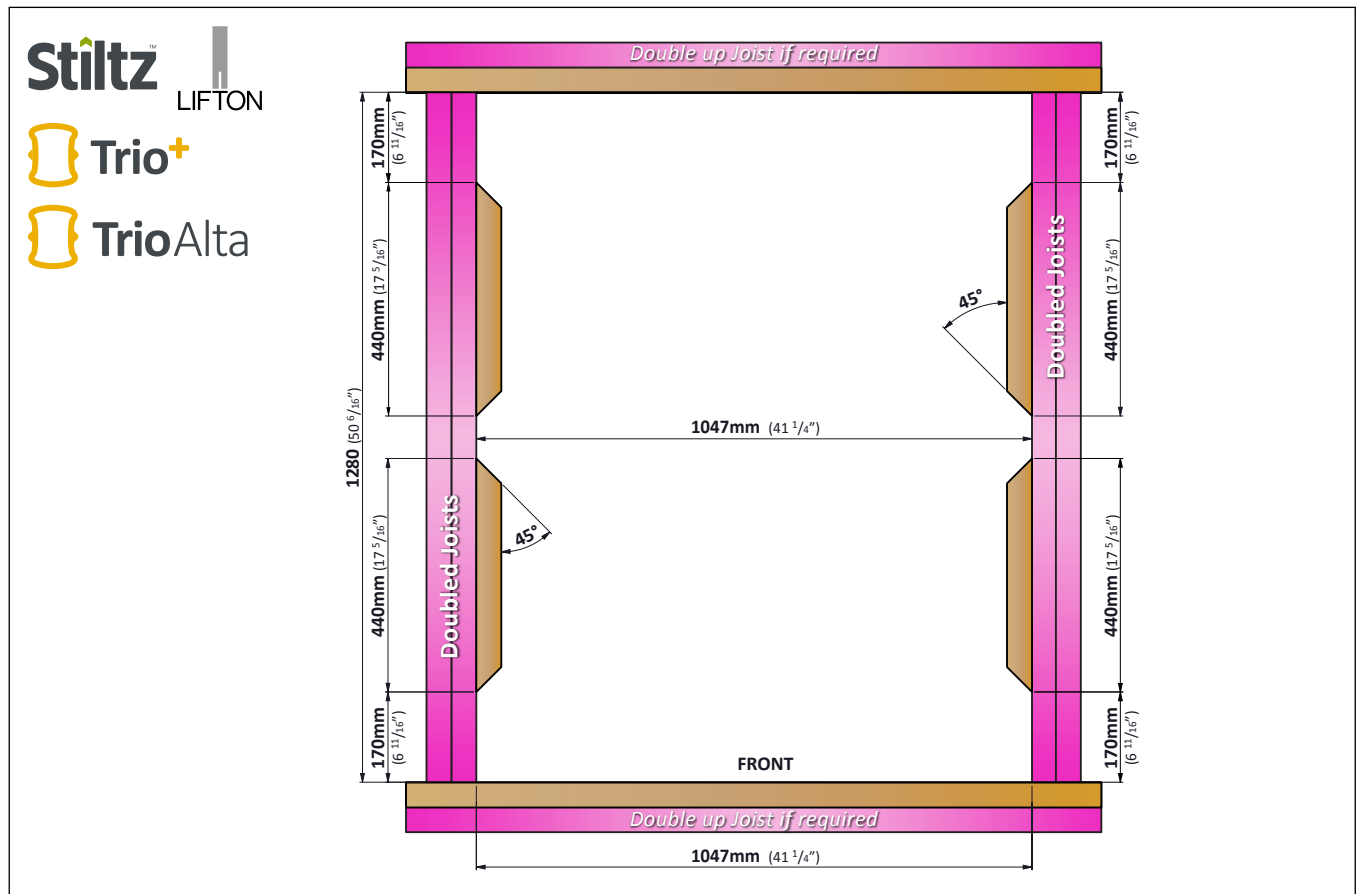


Frame build dimensions - Duo+ and Duo Alta

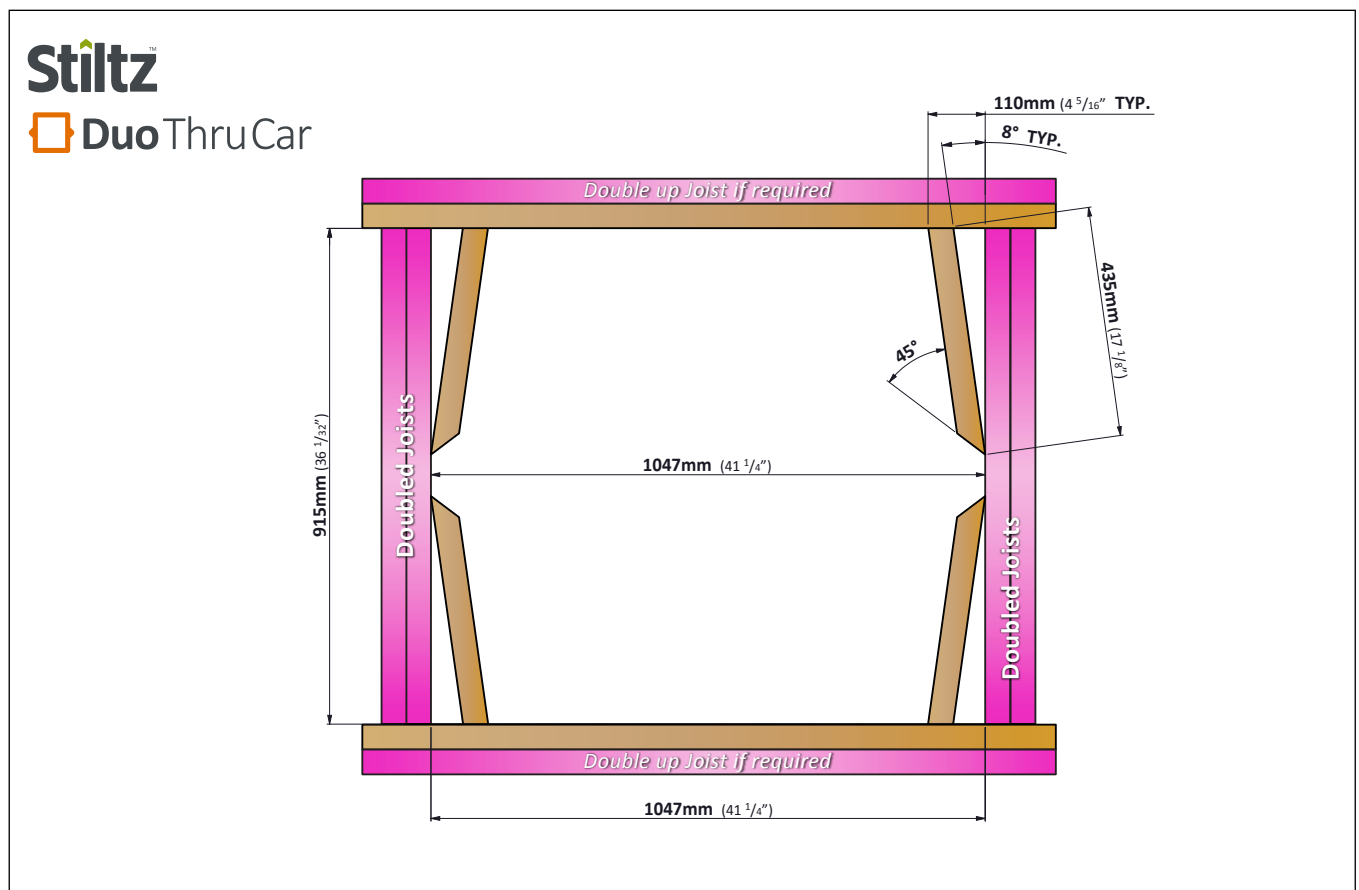




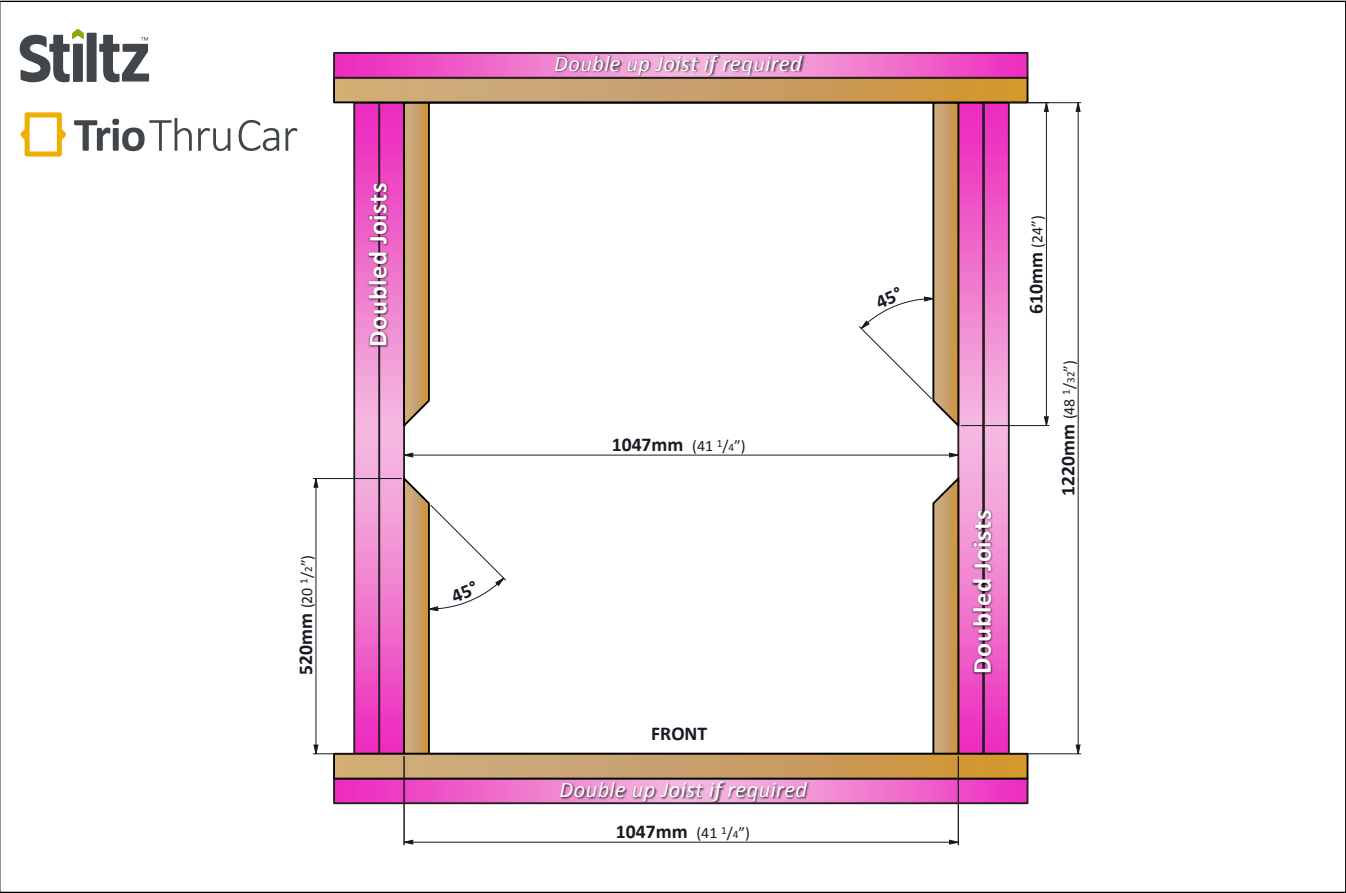
## Frame build dimensions - Trio+ and Trio Alta



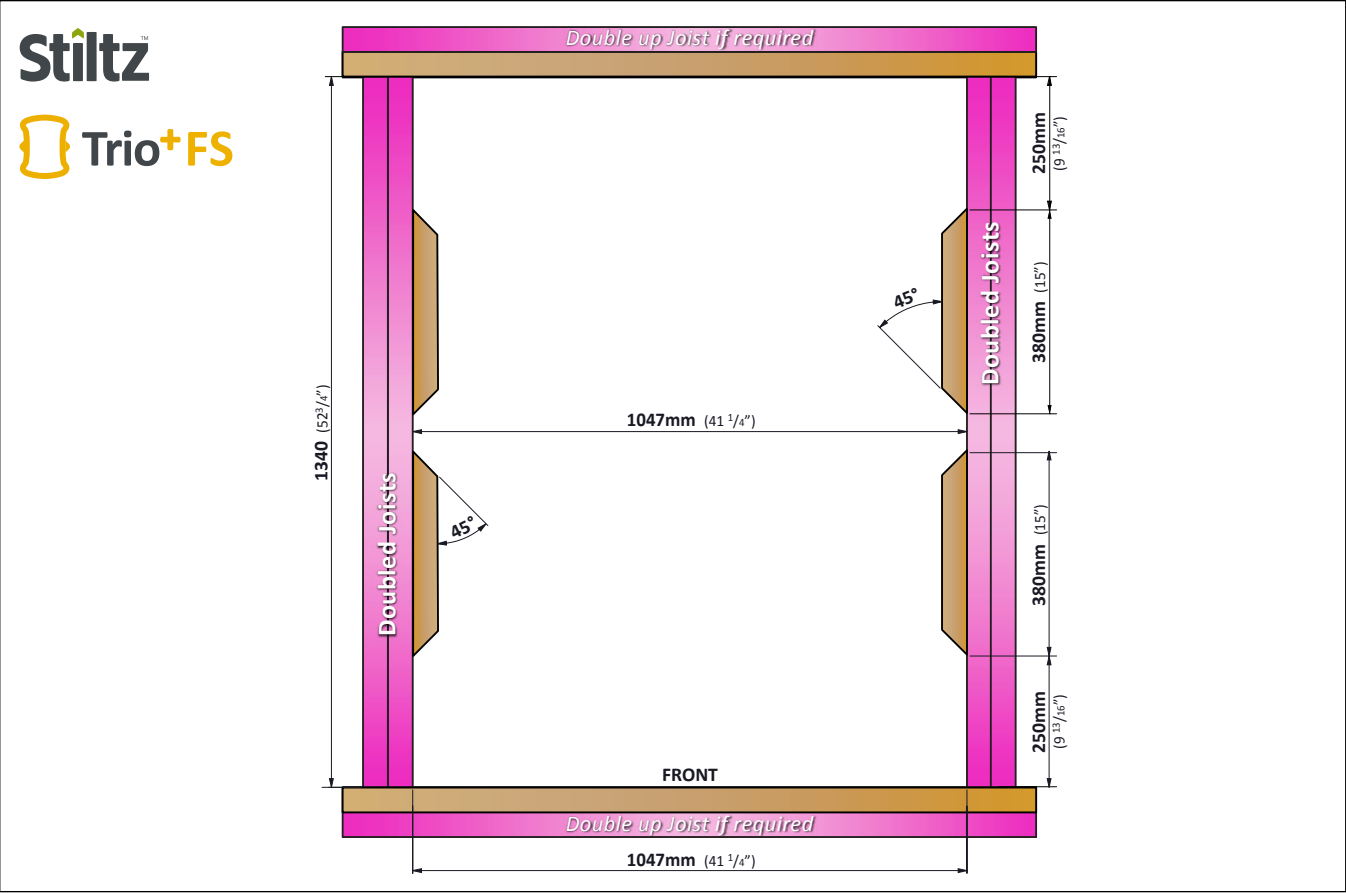
## Frame build dimensions - Duo ThruCar



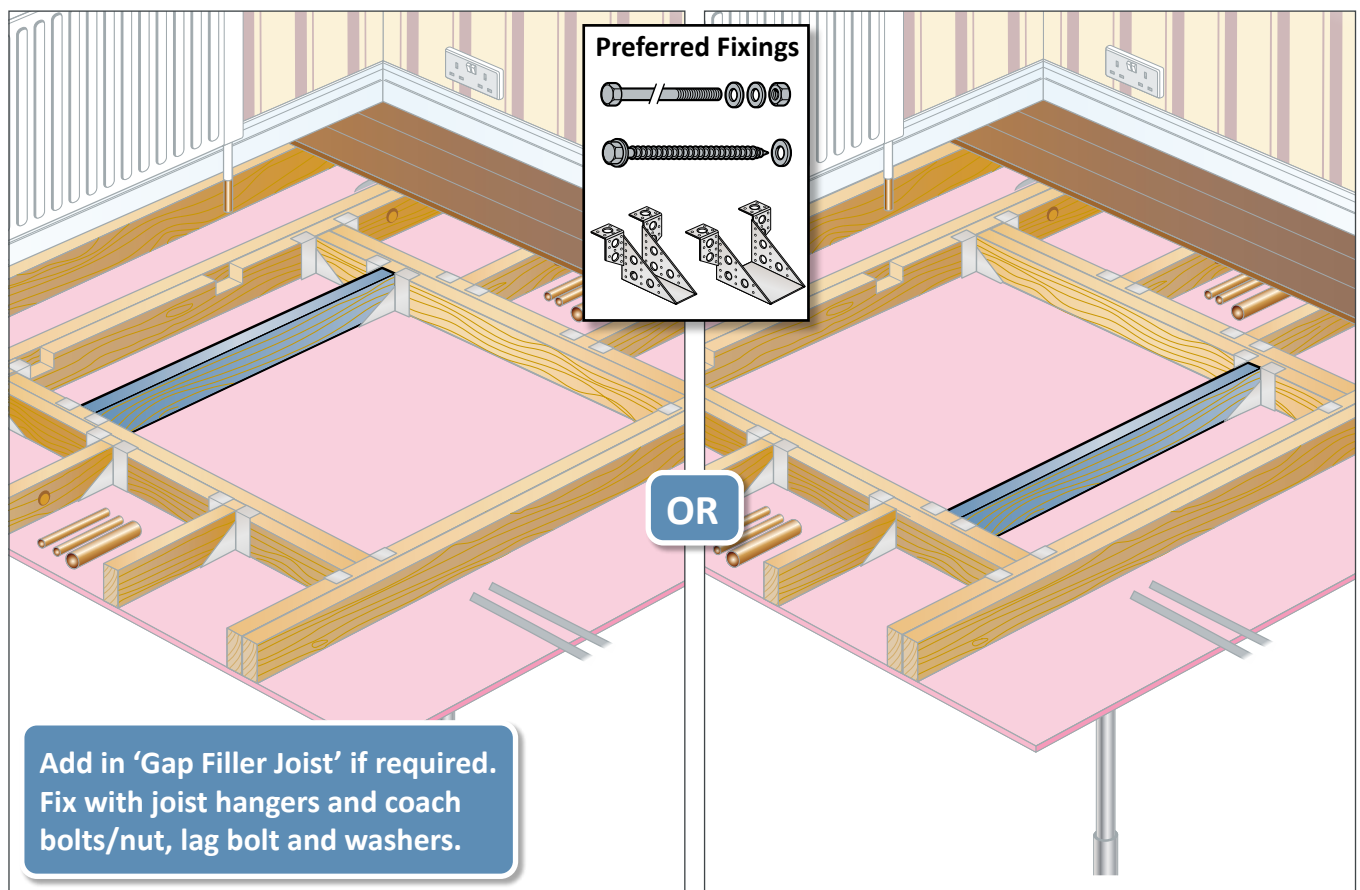
Frame build dimensions - Trio ThruCar



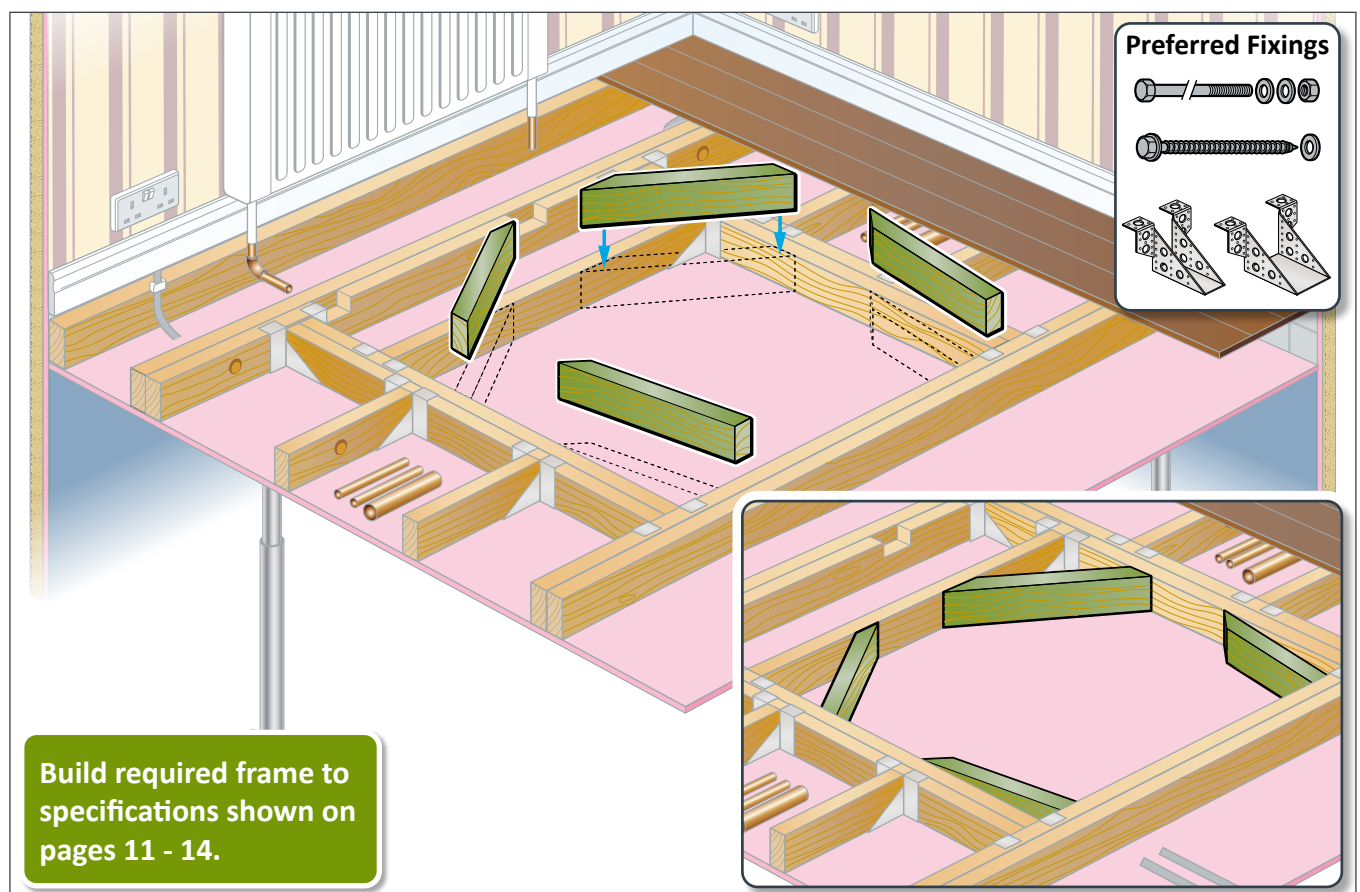
Frame build dimensions - Trio+ Fire Seal



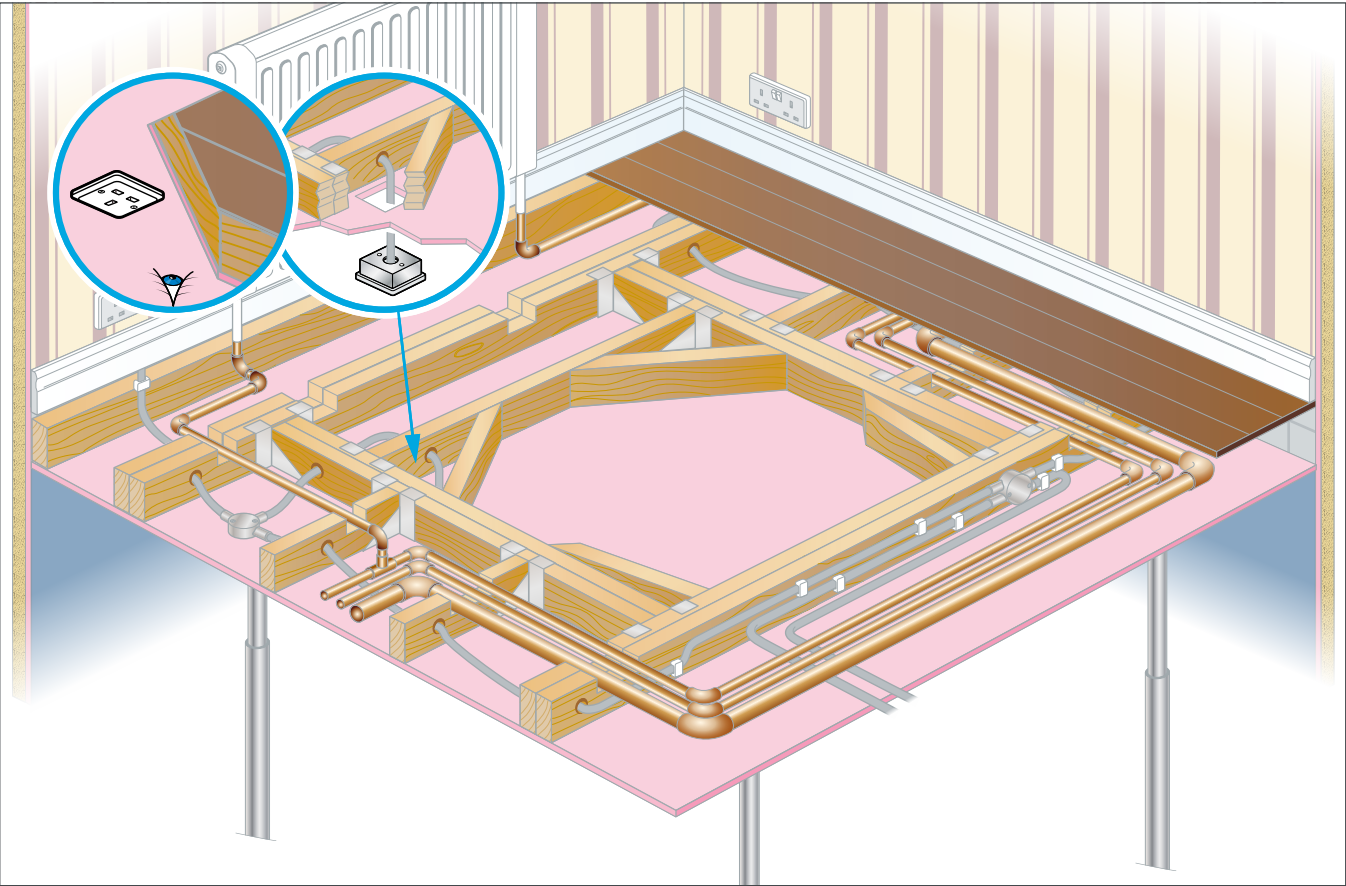
## Build frame



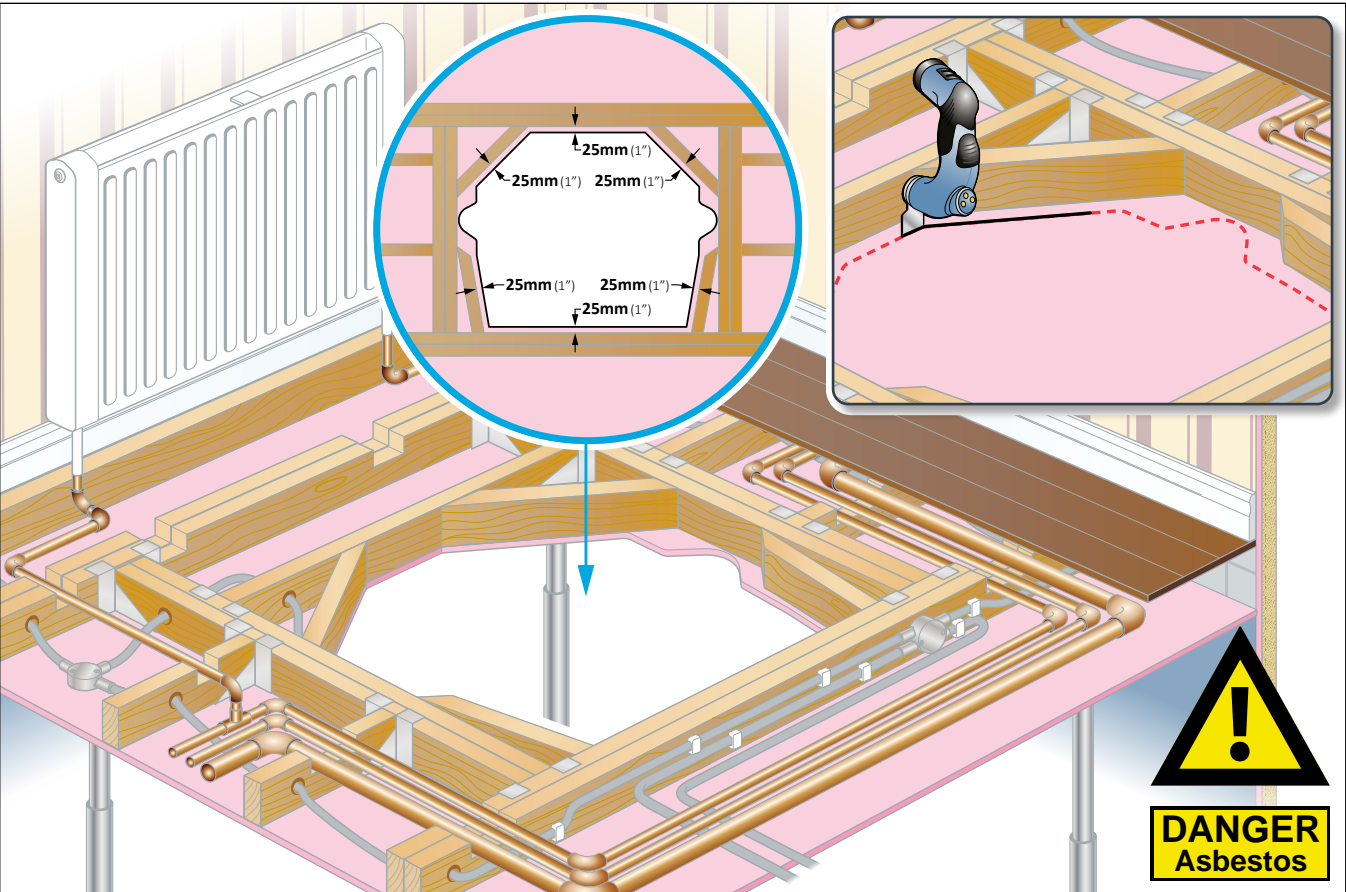
## Build frame



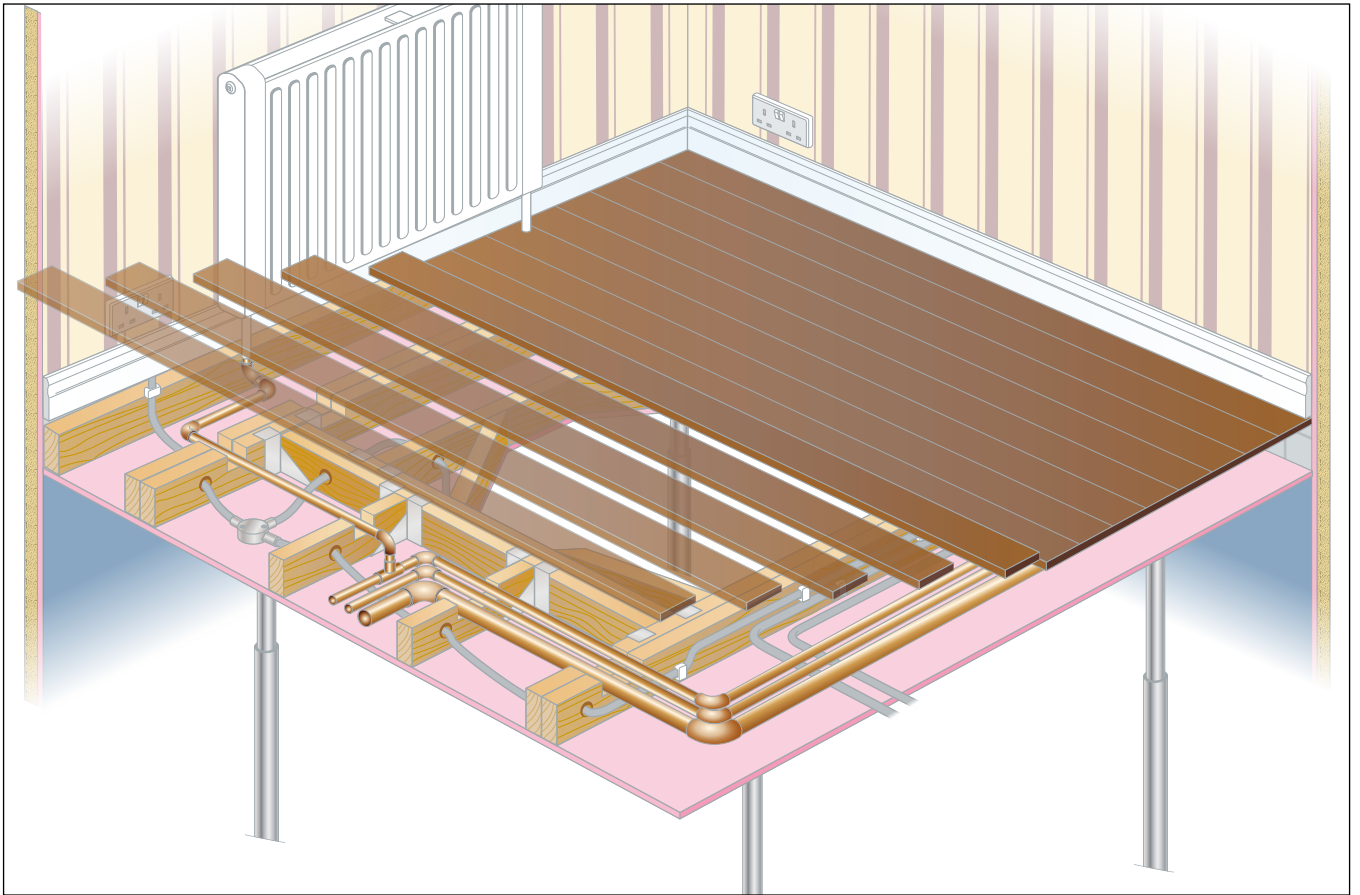
Re-routing pipes and cables around frame



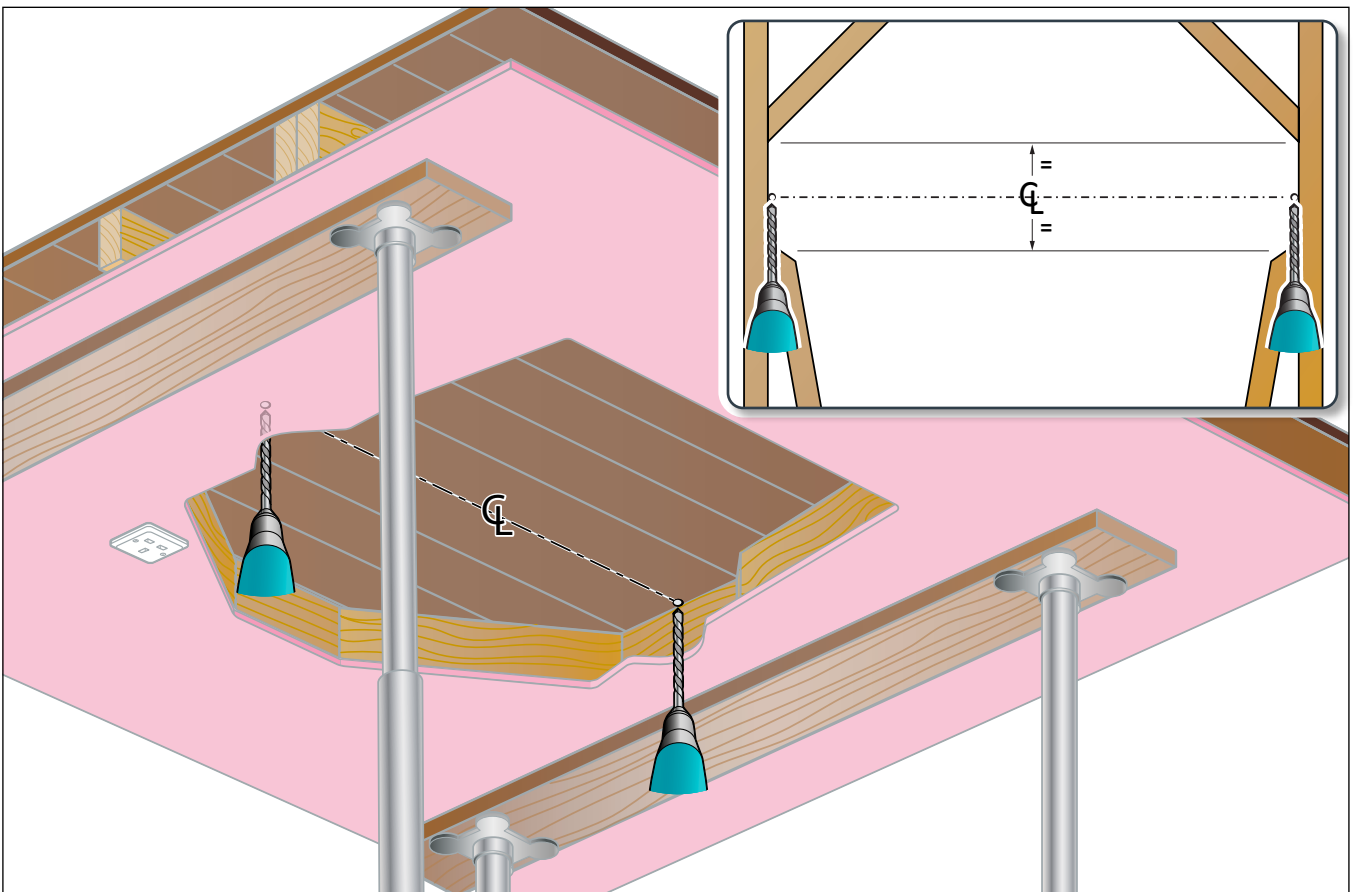
Cut aperture through ceiling



## Re-lay floor boards

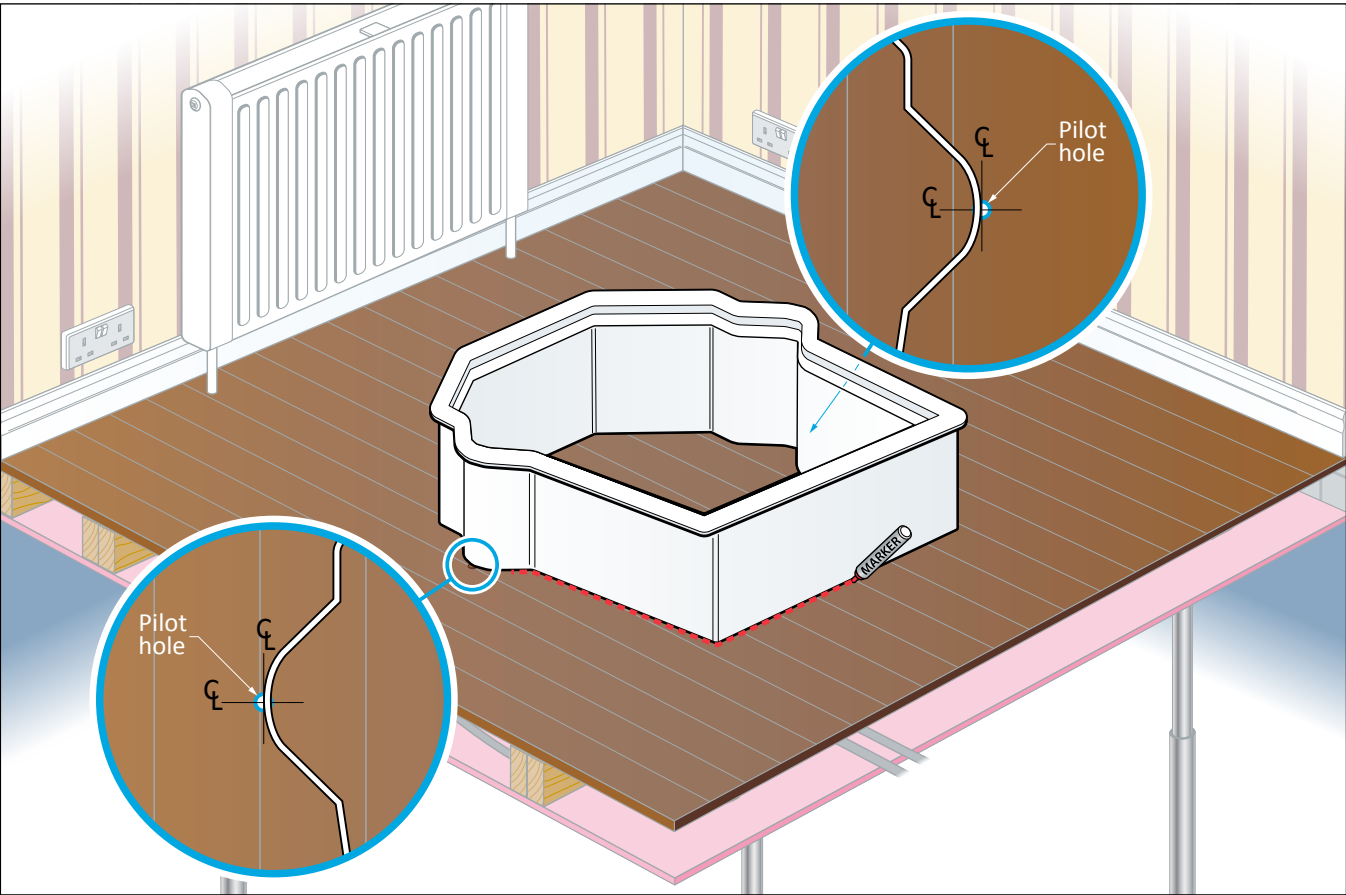


## Drill pilot holes from below

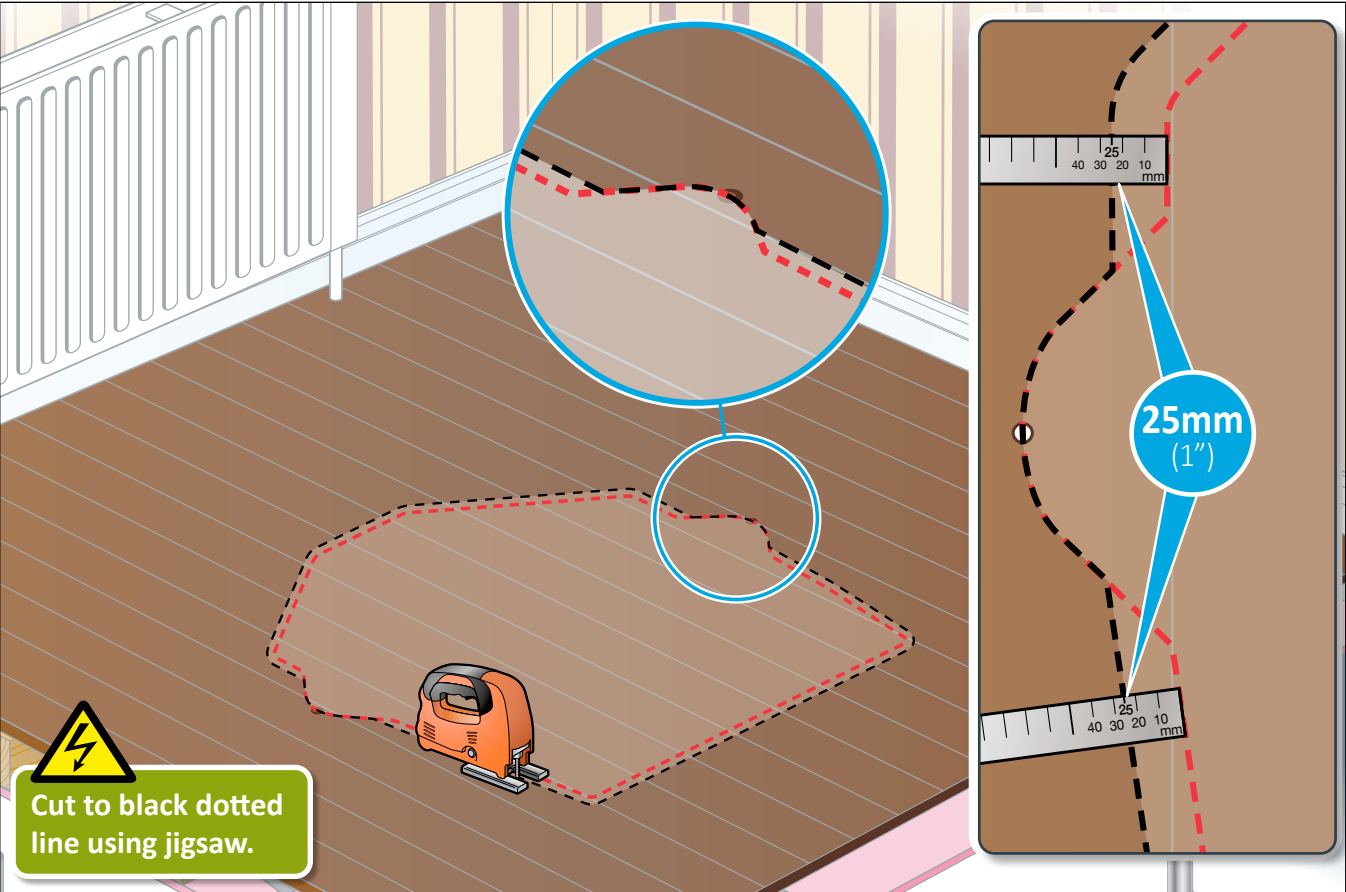




Position insert on pilot holes and draw round insert

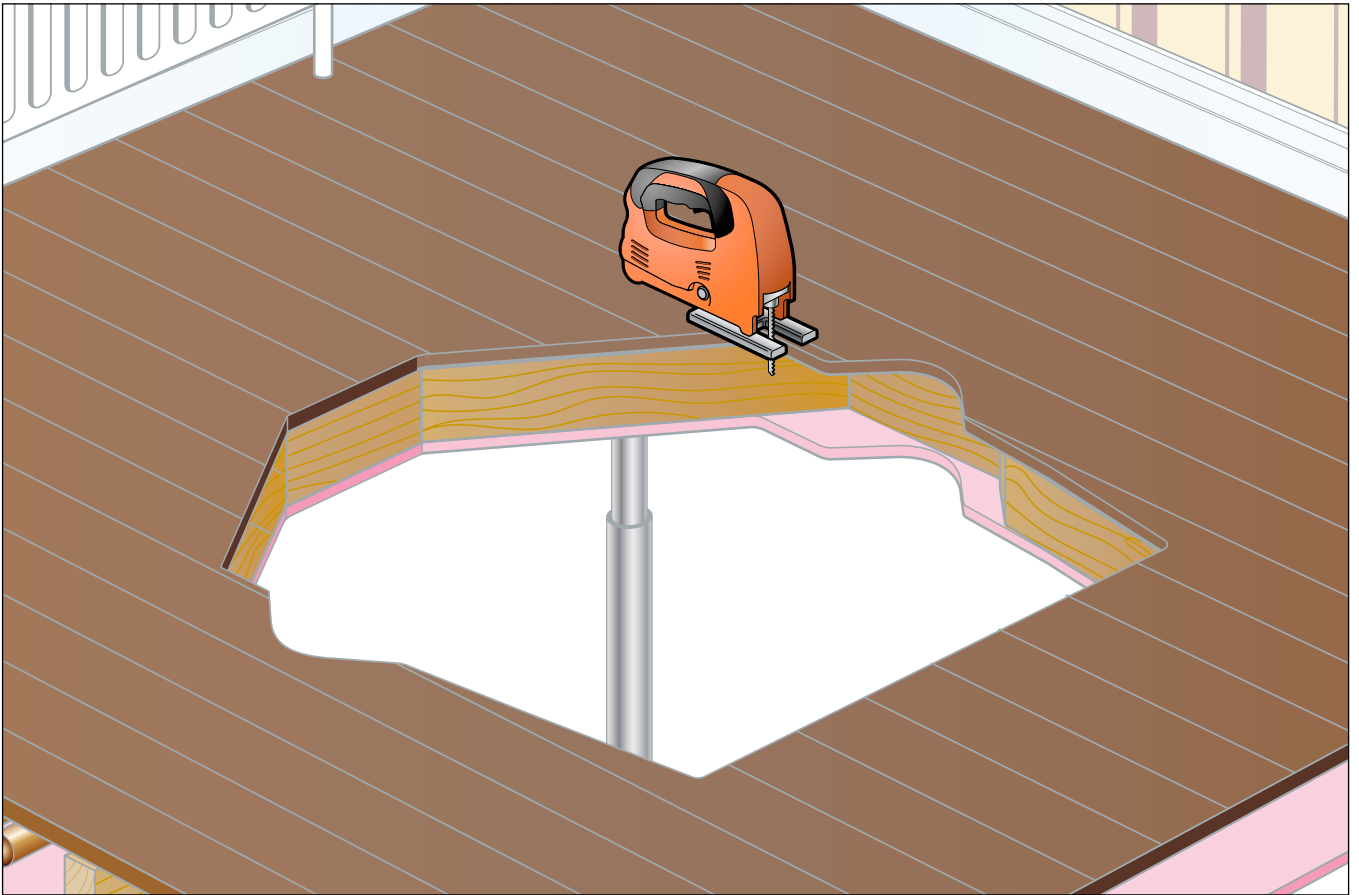


Add 25mm (1") to perimeter, excl. guide rail profile 'ears'

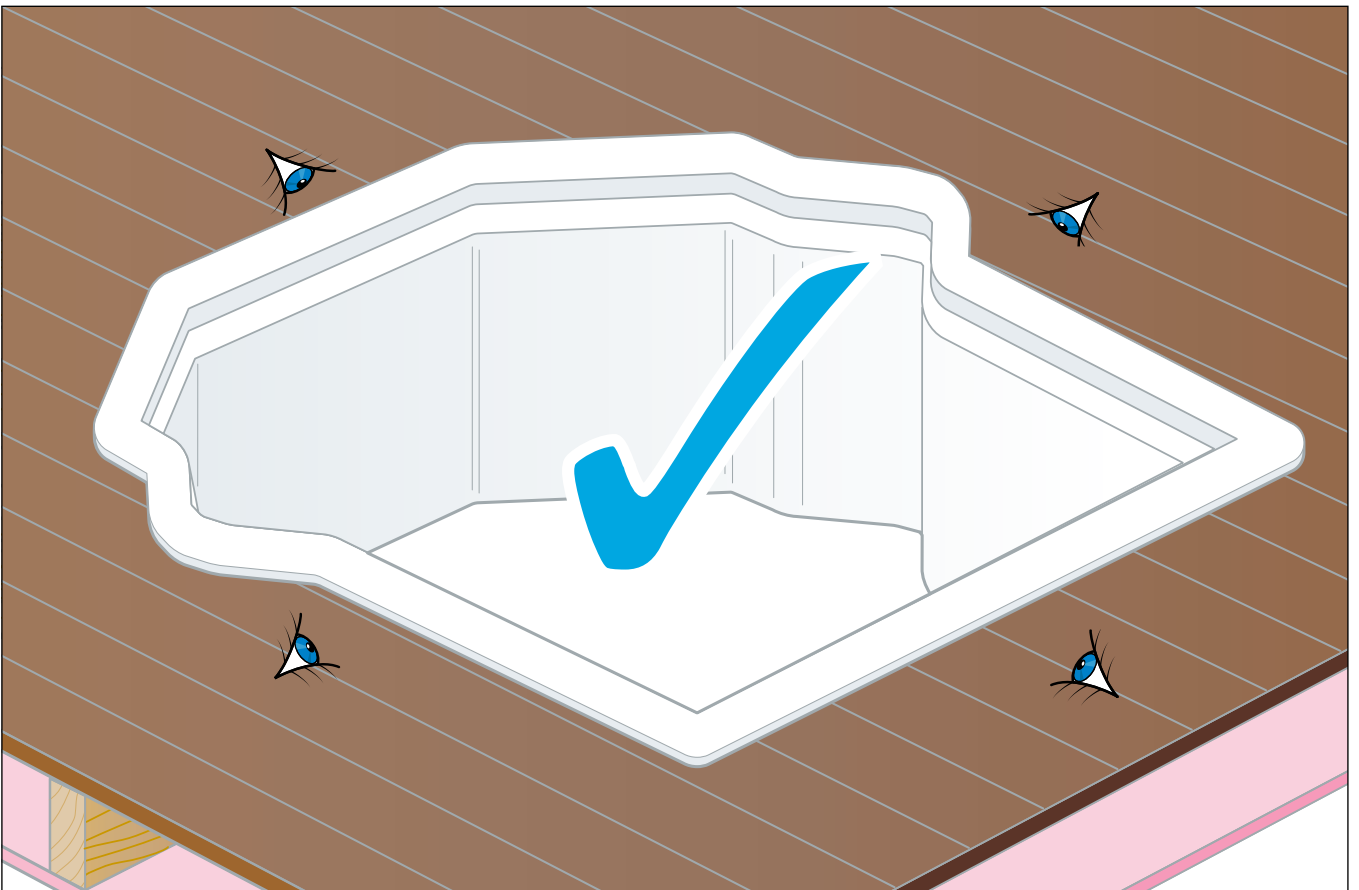




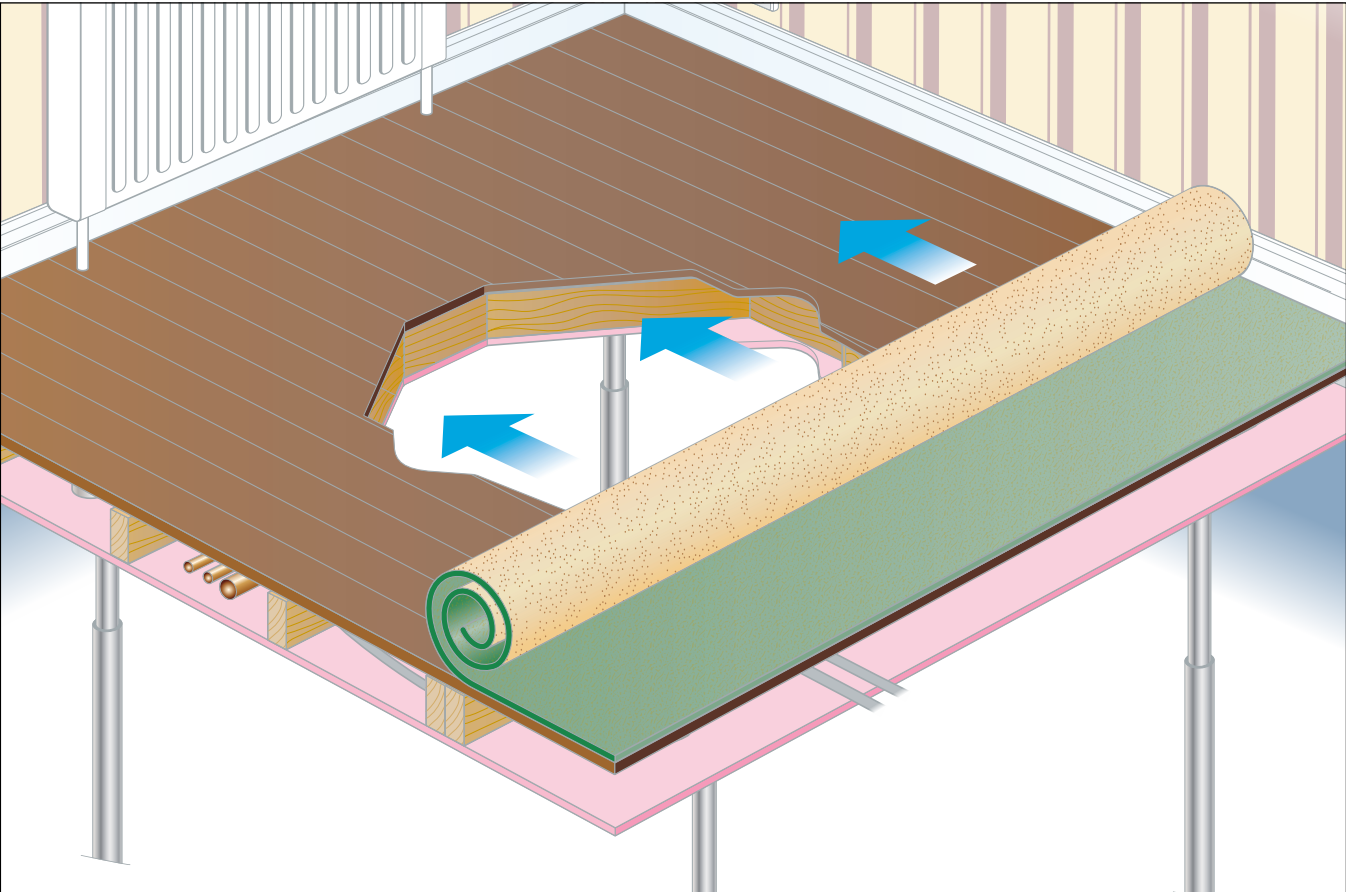
Cut out aperture



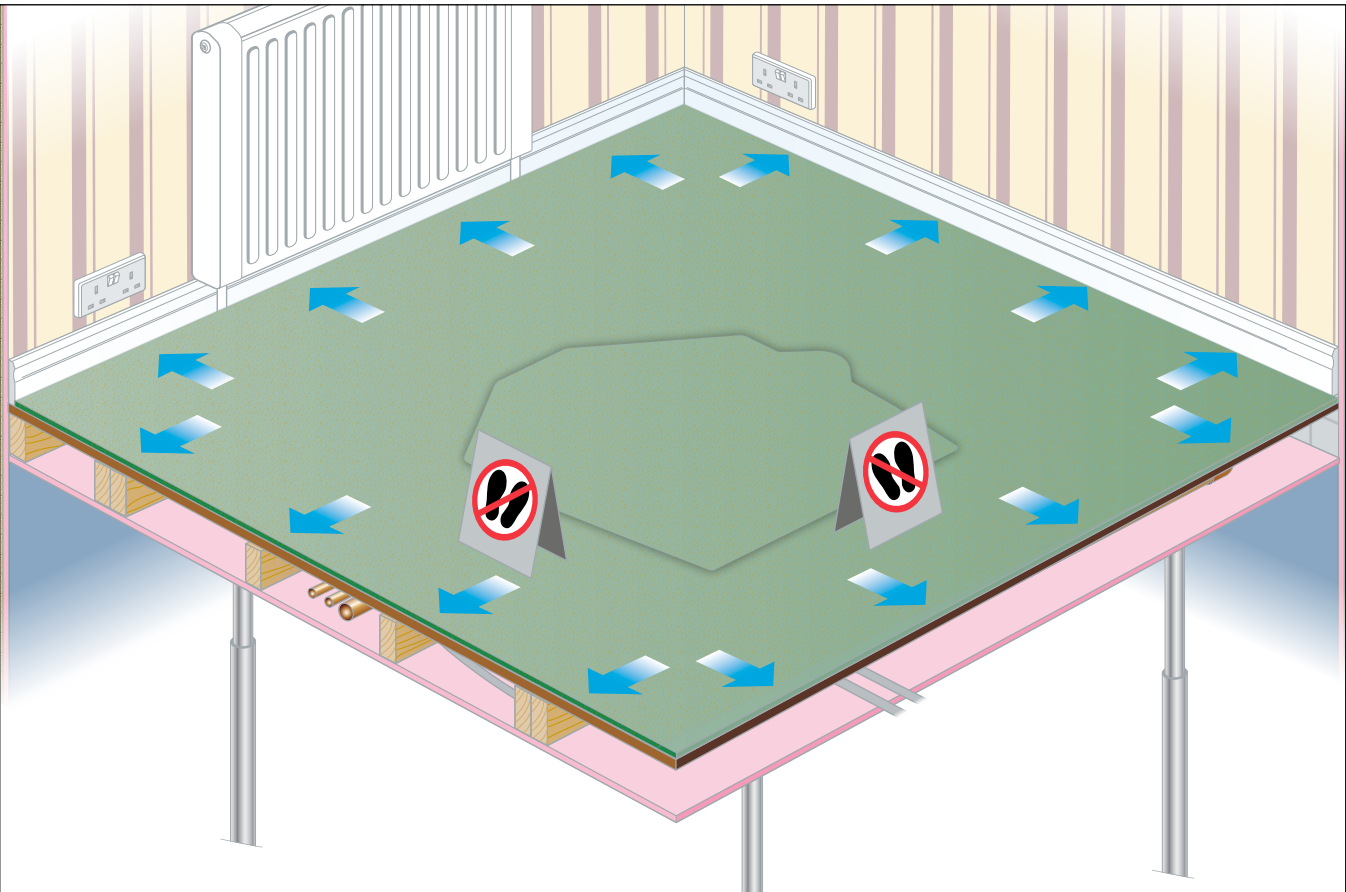
Check that insert fits



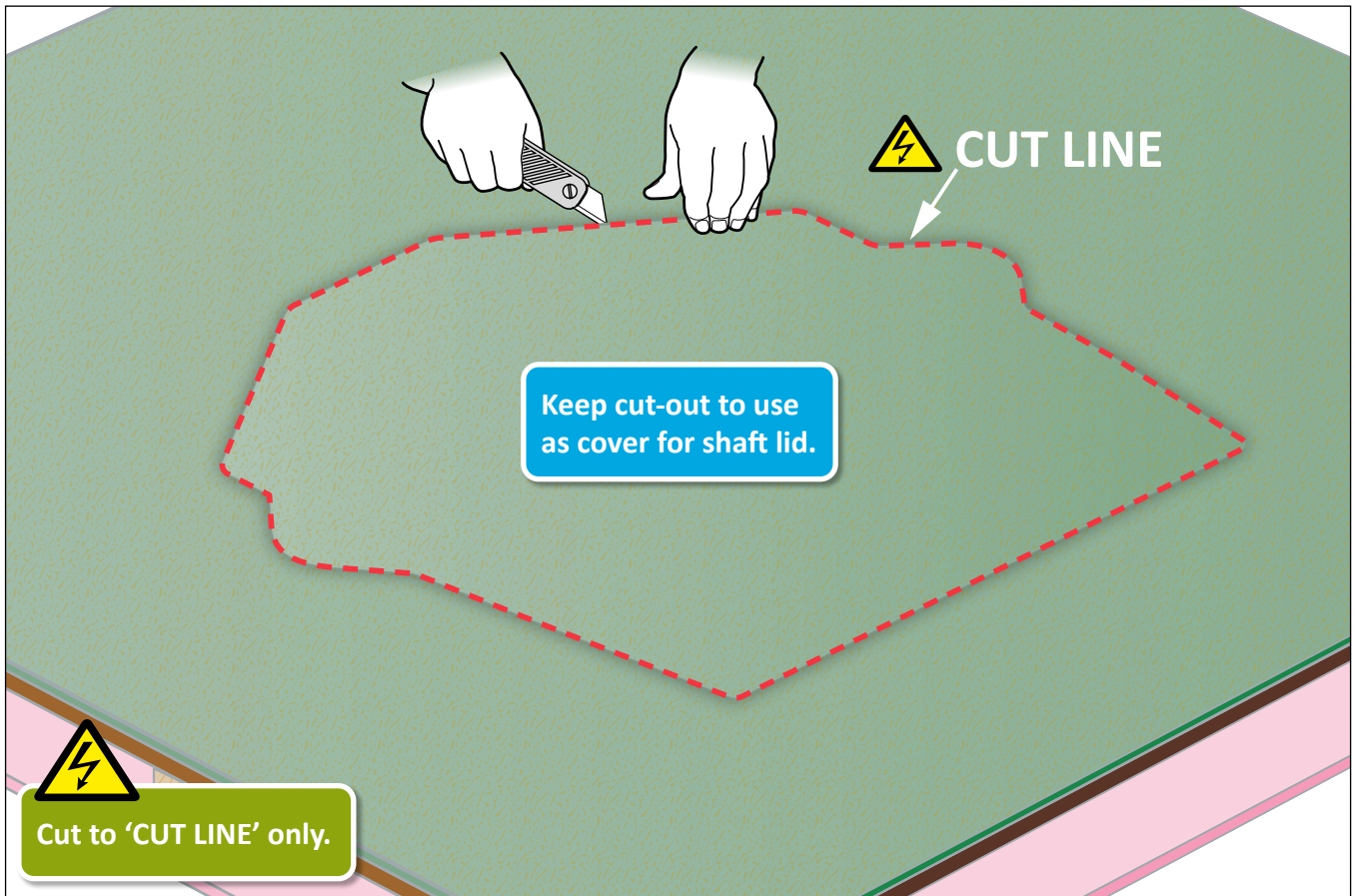
Remove insert and re-lay carpet



Stretch and re-fit carpet



Feel for edges and cut carpet for aperture



Remove and retain carpet cut-out

